

# Au J1939 Simulator Upgrade Procedure (SN-2008 only)

**Note: The firmware is dedicated design for AU J1939 Simulator SN-2008 only.  
Any attempt to use this file to any other devices will result in non-function units.**

September 2025

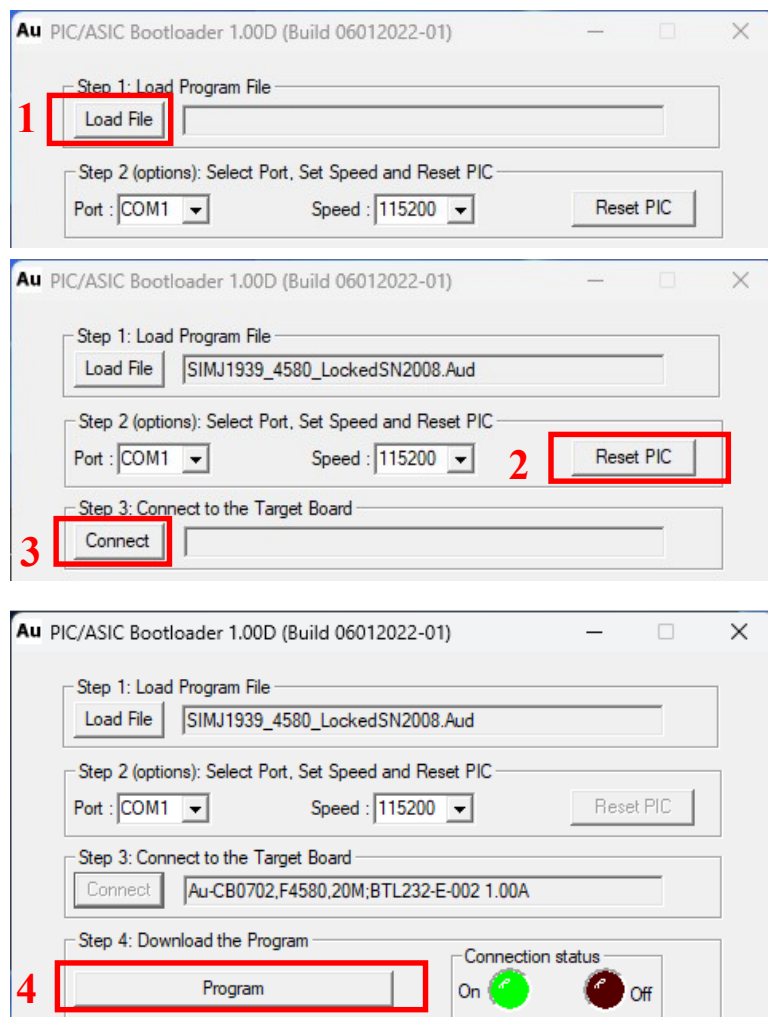
Find a ZIP file "SIMJ1939\_100A\_4580\_Locked\_SN2008\_Script.ZIP" in the attachment, unzip it, the following 5 files are included:

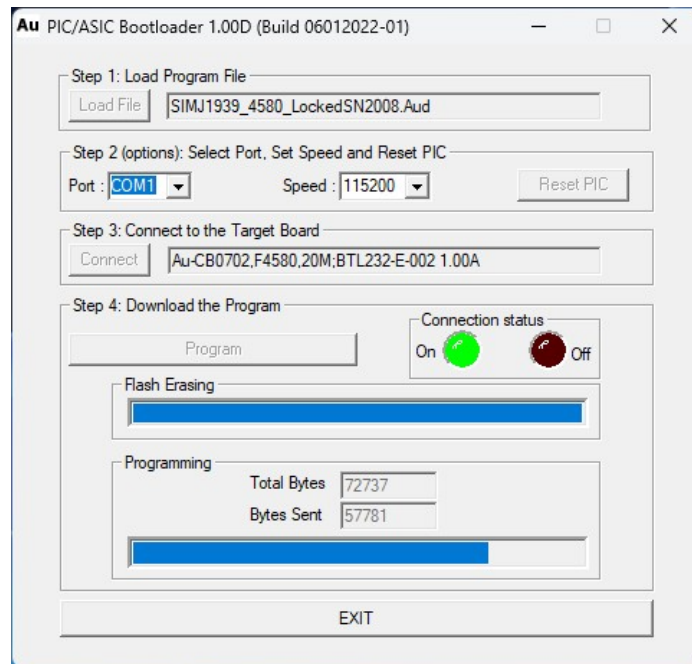
1. Au J1939 Simulator Upgrade Procedure to Script Edition for SN2008.pdf
2. Setup Au PIC Bootloader V1.00D Build 06012022-01.exe
3. setup J1939 Simulator Remote Terminal V1.00A Build 06212022-01
4. SIMJ1939\_4580\_LockedSN2008.Aud
5. usermanual\_simj1939\_1i.pdf

## Firmware Upgrading Procedure:

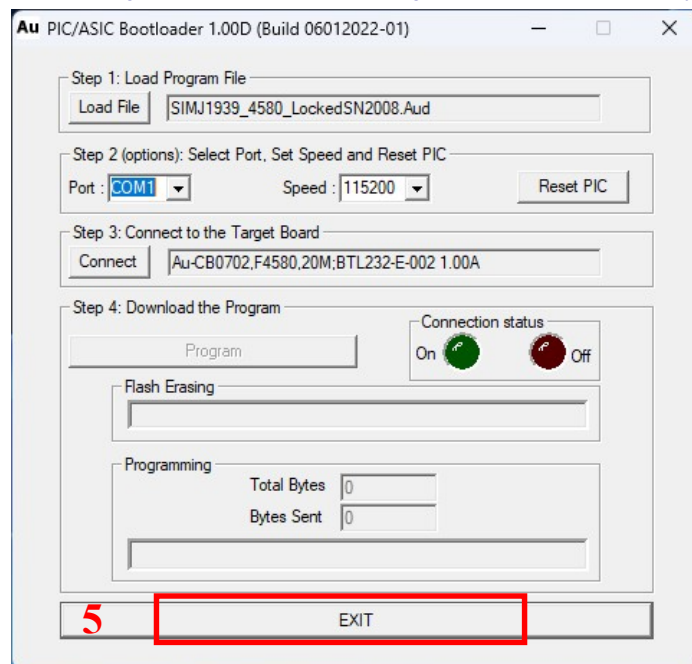
**Before upgrade, please uninstall the previous Au J1939 Simulator remote terminal GUI on your PC!!!!**

1. Power up the Au J1939 Simulator SN-2008 and connect it to a PC serial port.
2. Double click "Setup Au PIC Bootloader V1.00D Build 06012022-01.exe" file to install Au PIC Bootloader. Note: Detail procedure on how to install Au PIC Bootloader can be found from:  
[https://auelectronics.com/UserManual-Au\\_PICBootloader.htm](https://auelectronics.com/UserManual-Au_PICBootloader.htm)
3. Open Au PIC Bootloader PC software, and load "SIMJ1939\_4580\_LockedSN2008.Aud" to upgrade Au J1939 Simulator firmware.



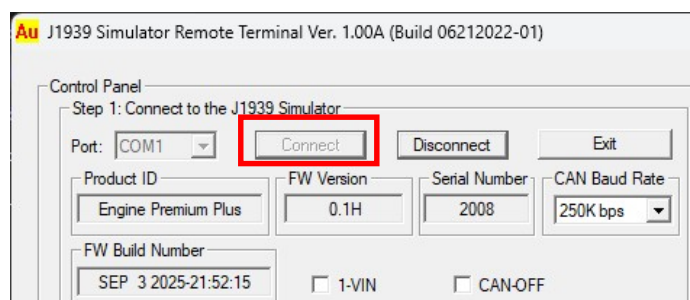


4. A long beep will be heard indicating new firmware boot loading process has successfully accomplished, click Exit

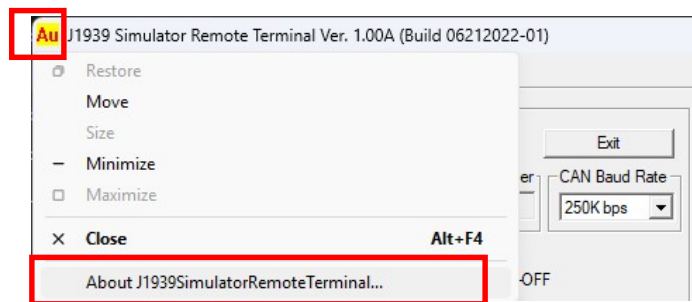


## License upgrading Procedure

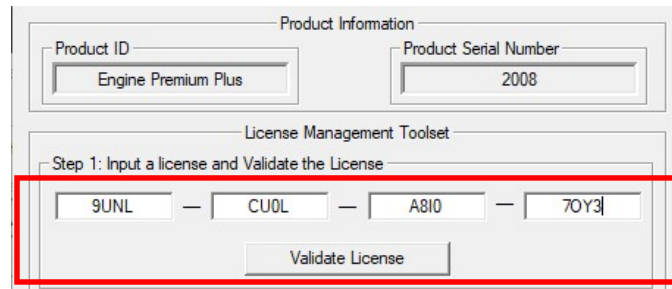
1. Double click file " setup J1939 Simulator Remote Terminal V1.00A Build 06212022-01" and follow the steps to install Au J1939 Simulator Remote Terminal GUI
2. Choose the corresponding serial port, then click "Connect" button if the Simulator is not connected to serial port automatically.



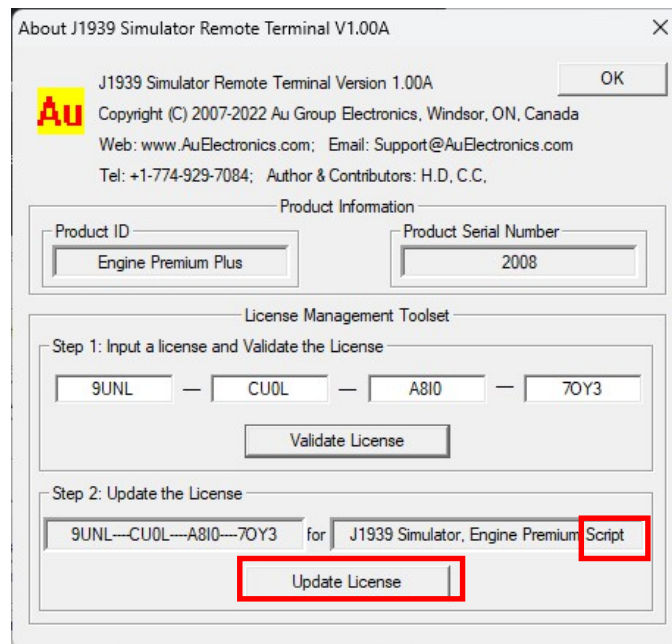
3. Click “Au” icon on the top left corner of the GUI, then choose “AboutJ1939SimulatorRemoteTerminal...”



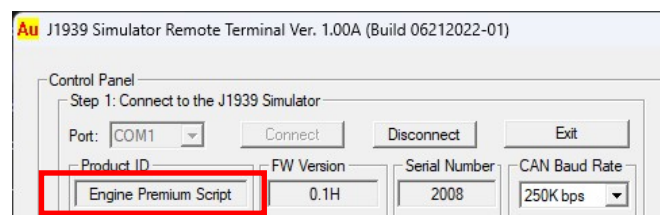
4. Input the following license code **9UNL----CU0L----A8I0----7OY3** and then click “Validate License” button



5. Make sure the license is for J1939 Simulator Engine Premium Script edition, then click “Update License” button



6. Now the J1939 Simulator SN-2008 has been upgraded from Engine Premium Plus edition to **Engine Premium Script** edition. The script function is enabled. Please refer to the user manual “usermanual\_simj1939\_1i.pdf” on how to use the script function.



Thanks for choosing Au Group Electronics products.  
Should you have any question, please do not hesitate to let us know.

[www.auelectronics.com](http://www.auelectronics.com)  
[support@aelectronics.com](mailto:support@aelectronics.com)